

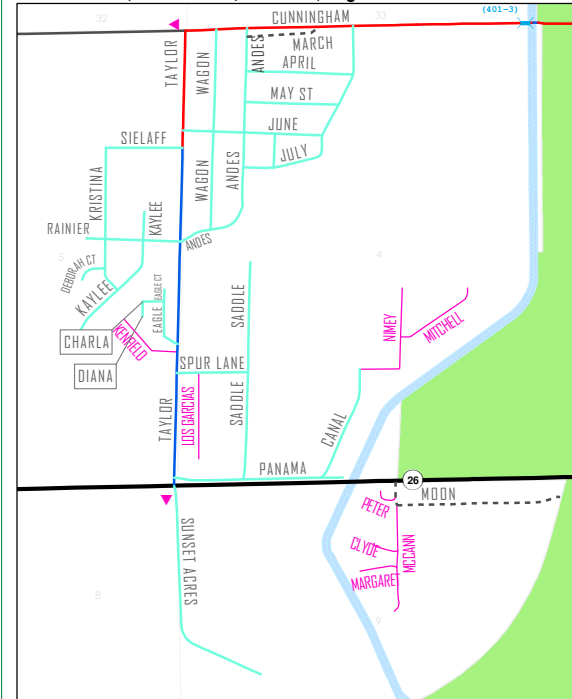
ADAMS COUNTY, WASHINGTON

Maintenance Area #3

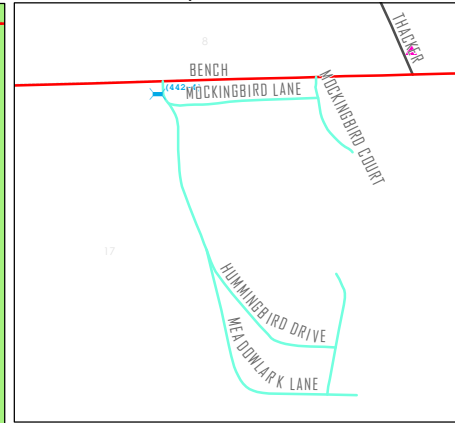
DEPARTMENT OF PUBLIC WORKS | Todd O'Brien, Director Scott Yaeger, County Engineer | CREATED 2017

Disclaimer: This product is provided "as is" without warranty of any kind, either expressed or implied, including, but not limited to, the implied warranties of merchantability and fitness for a particular use. Adams County will not be liable to the user of this product for any activity involving the product. Adams County cannot assume the reliability or suitability of this information for a particular purpose. Original data was compiled from various sources. Spatial information may not meet National Map Accuracy Standards though it is constantly being improved so that it will meet or exceed these standards. This information may be updated without notification.

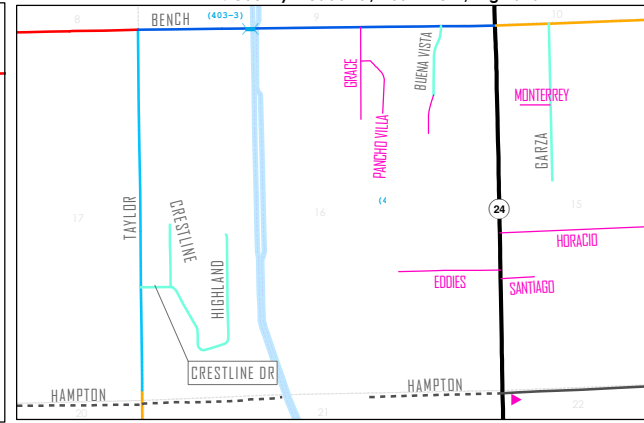
1. Edson Tracts / Canal Tracts / Kameron / Eagle



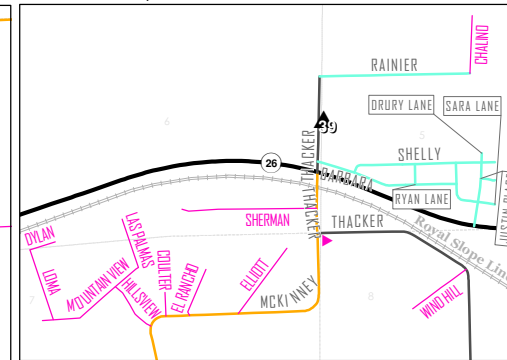
2. Othello Golf & Country Club



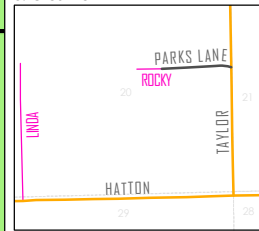
4. Country Meadows / Basin View / Highland



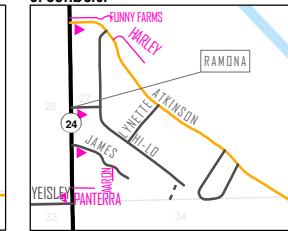
5. Rainier Tracts / Somerset West



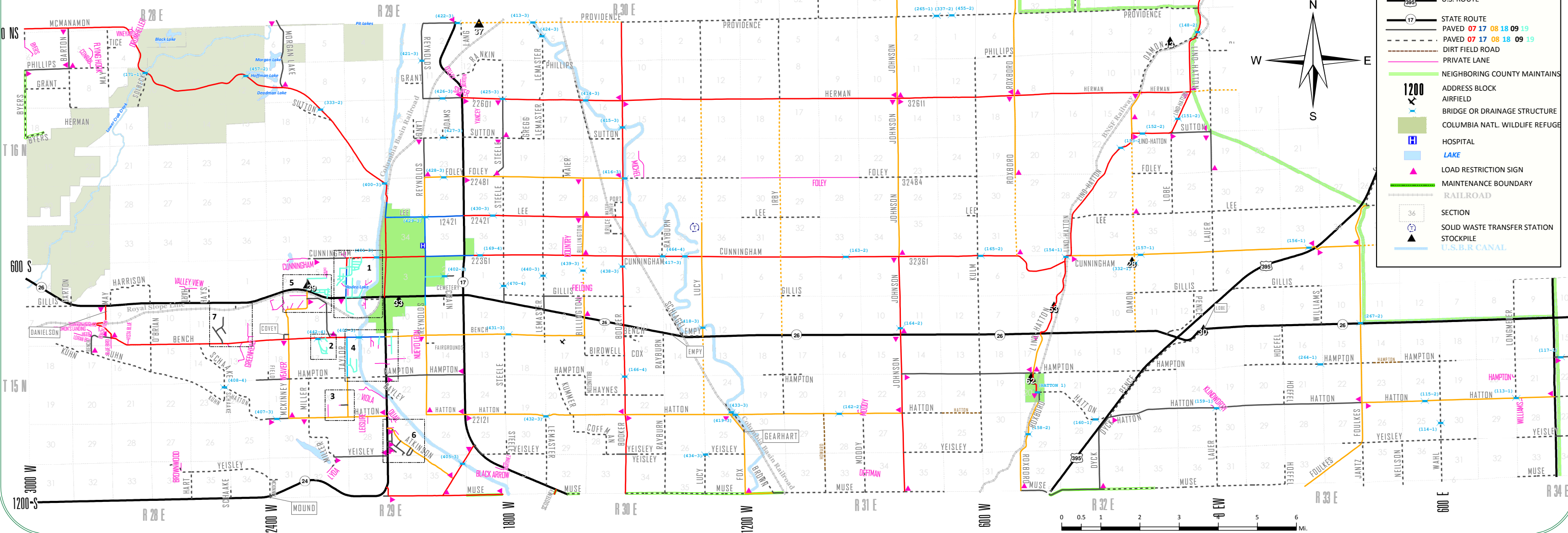
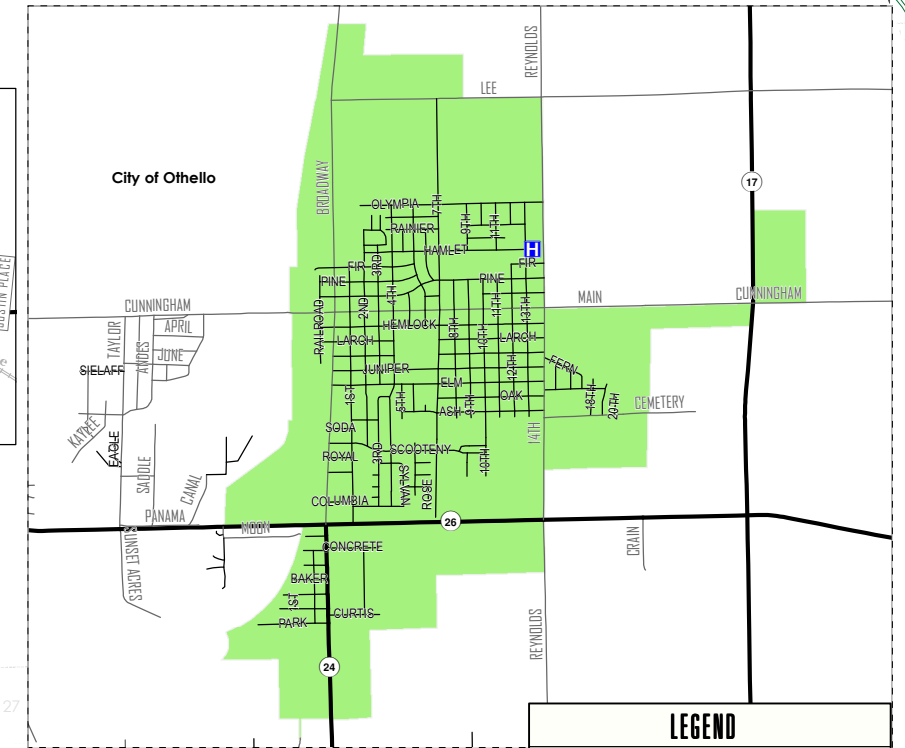
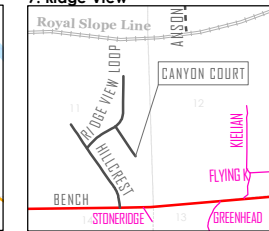
3. Crestview



6. Sunburst



7. Ridge View



LEGEND

- INTERSTATE HIGHWAY
- U.S. ROUTE
- STATE ROUTE
- PAVED 07 17 08 18 09 19
- PAVED 07 17 08 18 09 19
- DIRT FIELD ROAD
- PRIVATE LANE
- NEIGHBORING COUNTY MAINTAINS
- ADDRESS BLOCK
- AIRFIELD
- BRIDGE OR DRAINAGE STRUCTURE
- COLUMBIA NATL. WILDLIFE REFUGE
- HOSPITAL
- LAKE
- LOAD RESTRICTION SIGN
- MAINTENANCE BOUNDARY
- RAILROAD
- SECTION
- SOLID WASTE TRANSFER STATION
- STOCKPILE
- U.S.B.R. CANAL

