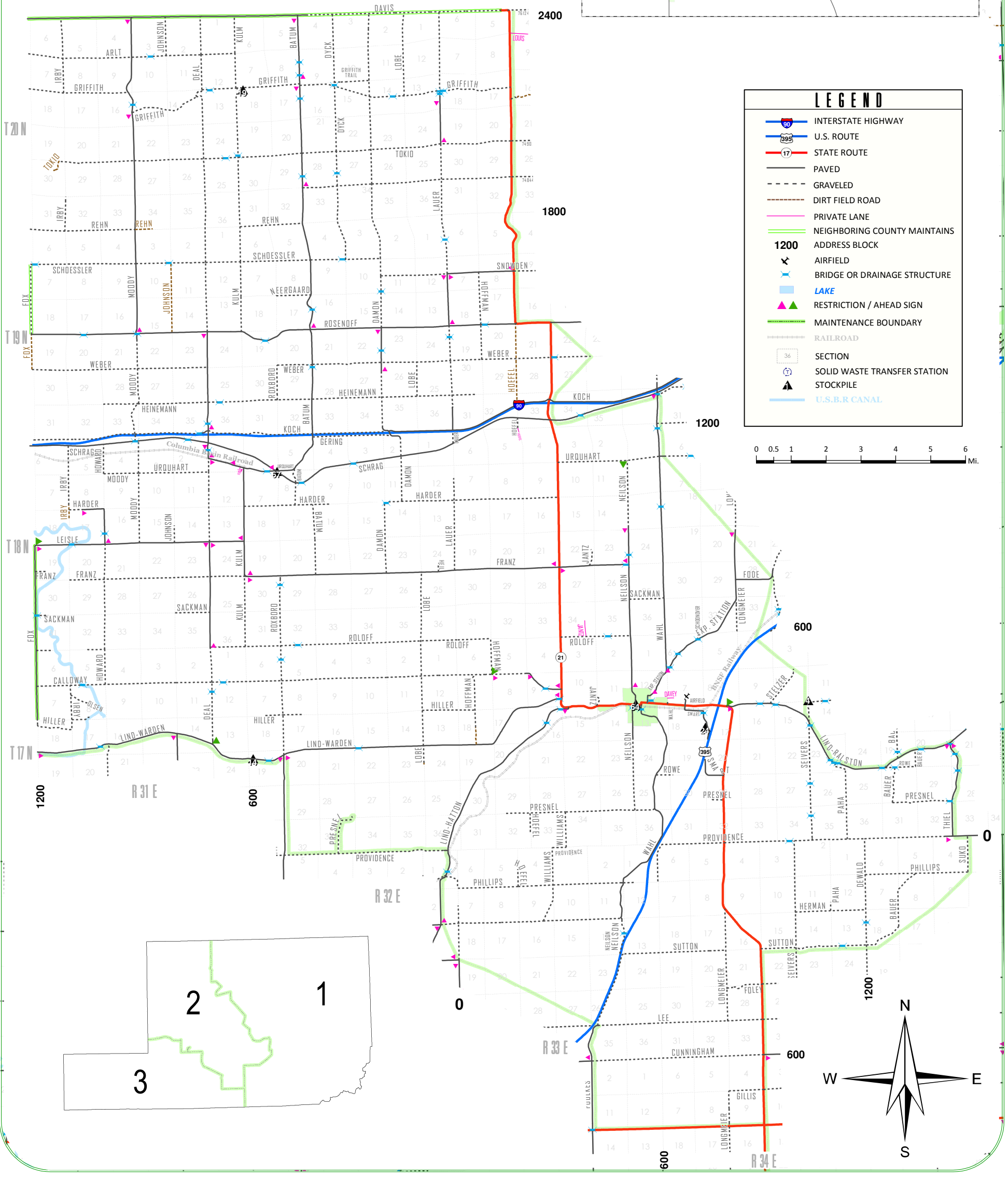
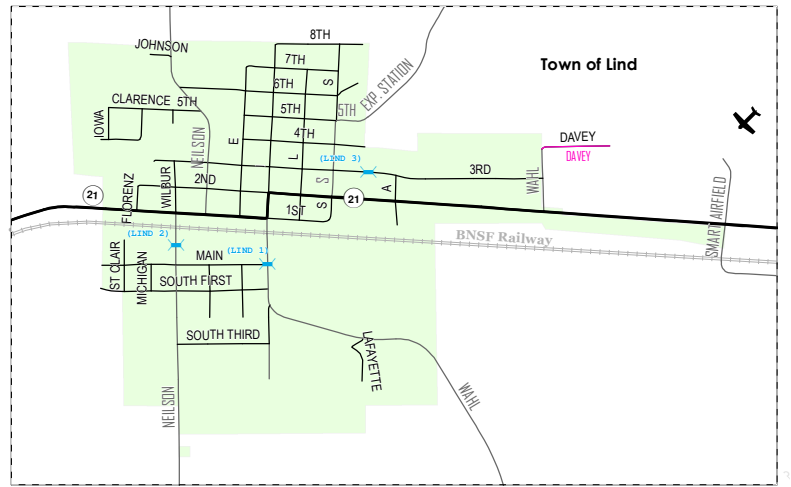


ADAMS COUNTY, WASHINGTON

Disclaimer: This product is provided 'as is' without warranty of any kind, either expressed or implied, including, but not limited to, the implied warranties of merchantability and fitness for a particular use. Adams County will not be liable to the user of this product for any activity involving the product. Adams County cannot assume the reliability or suitability of this information for a particular purpose. Original data was compiled from various sources. Spatial information may not meet National Map Accuracy Standards though it is constantly being improved so that it will meet or exceed these standards. THIS INFORMATION MAY BE UPDATED WITHOUT NOTIFICATION.

DEPARTMENT OF PUBLIC WORKS | Todd O'Brien, Director Scott Yaeger, County Engineer | CREATED 2018

Maintenance Area #2



LEGEND

- INTERSTATE HIGHWAY
- U.S. ROUTE
- STATE ROUTE
- PAVED
- GRAVELED
- DIRT FIELD ROAD
- PRIVATE LANE
- NEIGHBORING COUNTY MAINTAINS ADDRESS BLOCK
- AIRFIELD
- BRIDGE OR DRAINAGE STRUCTURE
- LAKE
- RESTRICTION / AHEAD SIGN
- MAINTENANCE BOUNDARY
- RAILROAD
- SECTION
- SOLID WASTE TRANSFER STATION
- STOCKPILE
- U.S.B.R CANAL

