

ADAMS COUNTY, WASHINGTON

Disclaimer: This product is provided "as is" without warranty of any kind, either expressed or implied, including, but not limited to, the implied warranties of merchantability and fitness for a particular use. Adams County will not be liable to the user of this product for any activity involving the product. Adams County cannot assure the reliability or suitability of this information for a particular purpose. Original data was compiled from various sources. Spatial information may not meet National Map Accuracy Standards though it is constantly being improved so that it will meet or exceed these standards. THIS INFORMATION MAY BE UPDATED WITHOUT NOTIFICATION.



DEPARTMENT OF PUBLIC WORKS

Todd O'Brien, Director
Scott Yaeger, County Engineer

CREATED 2011

PROPOSED COMMISSIONER DISTRICTS MAP

LEGEND

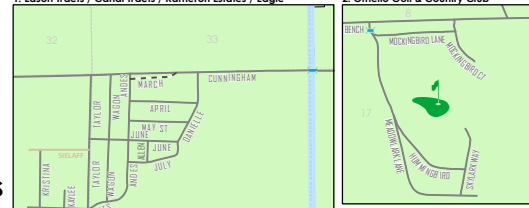
- DIST. #1 (Green)
- DIST. #2 (Purple)
- DIST. #3 (Red)

- INTERSTATE HIGHWAY (I-5)
- U.S. ROUTE (95)
- STATE ROUTE (17)
- PAVED COUNTY ROAD
- GRAVELED COUNTY ROAD
- DIRT FIELD ROAD
- PRIVATE LANE

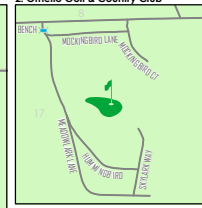
1200 ADDRESS BLOCK (N S E W)

- AIRFIELD
- BRIDGE OR DRAINAGE STRUCTURE
- CEMETERY
- CITIES
- COLUMBIA NATL. WILDLIFE REFUGE
- COMMERCIAL GRAIN STORAGE
- GOLF COURSE
- HOSPITAL
- LAKE
- RAILROAD
- SECTION
- SOLID WASTE TRANSFER STATION
- TRAIL
- TOWNSHIP/RANGE
- U.S.B.R. CANAL
- WSDOT MILE POSTS

1. Edson Tracts / Canal Tracts / Kameron Estates / Eagle



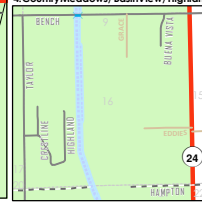
2. Othello Golf & Country Club



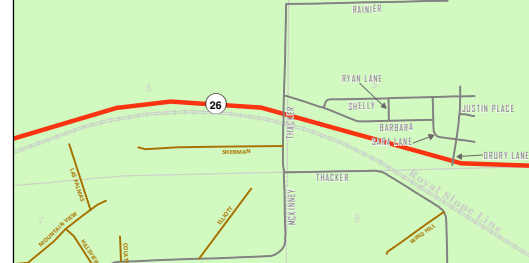
3. Crestview



4. Country Meadows / Basin View / Highland



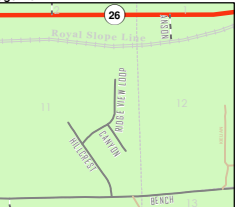
5. Rainier Tracts / Summerset West



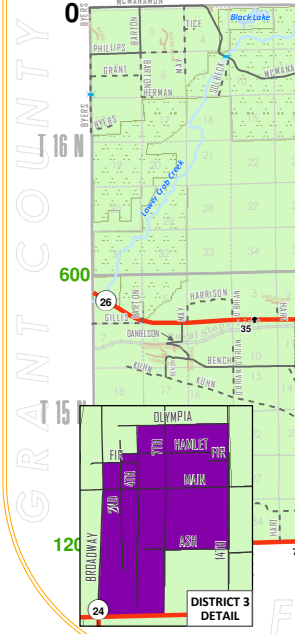
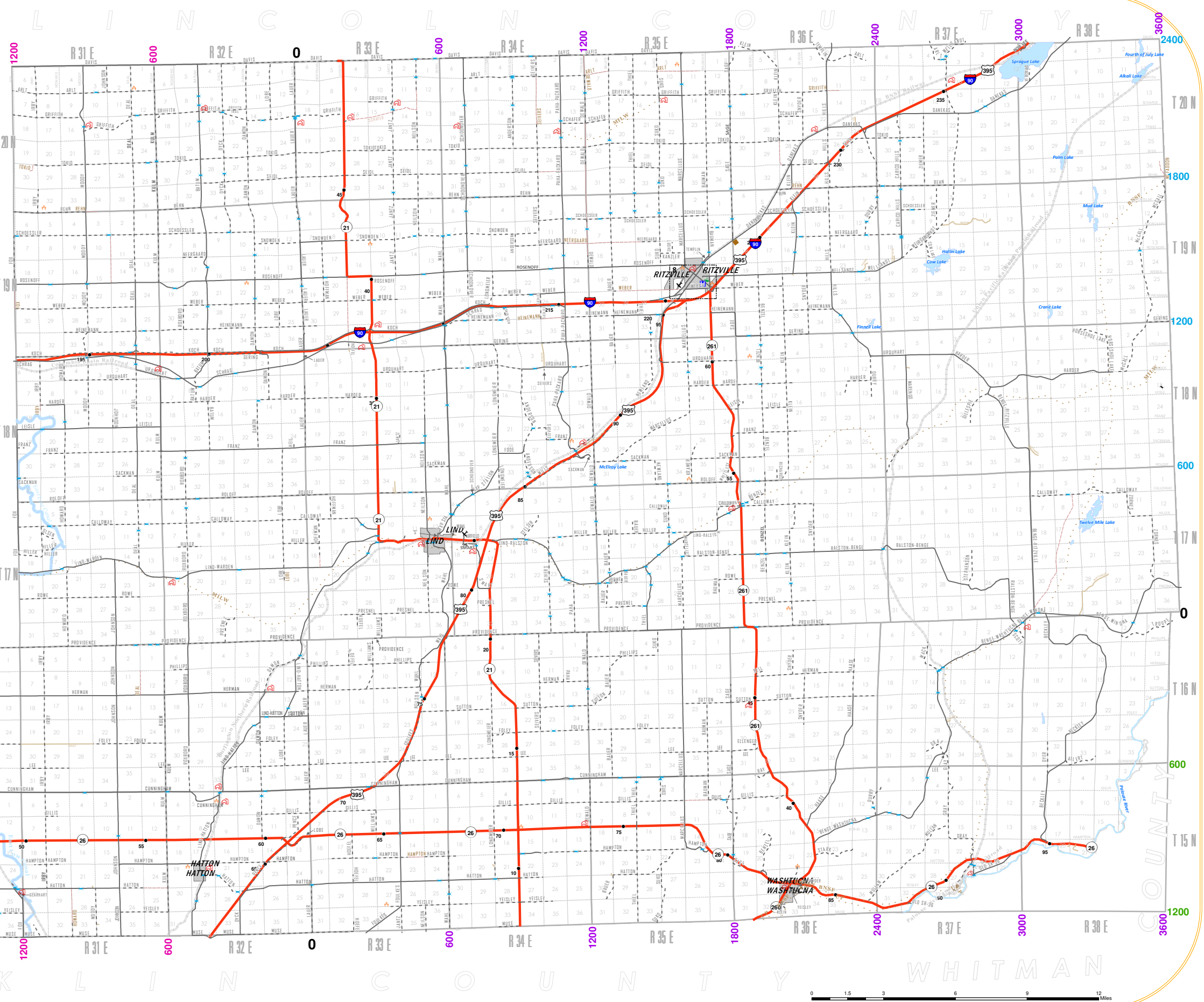
6. Sunburst Estates



7. Ridge View



8. Ritzville Vicinity



DISTRICT 3 DETAIL

