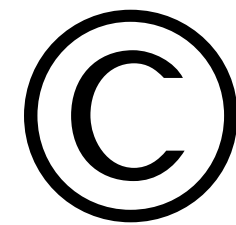
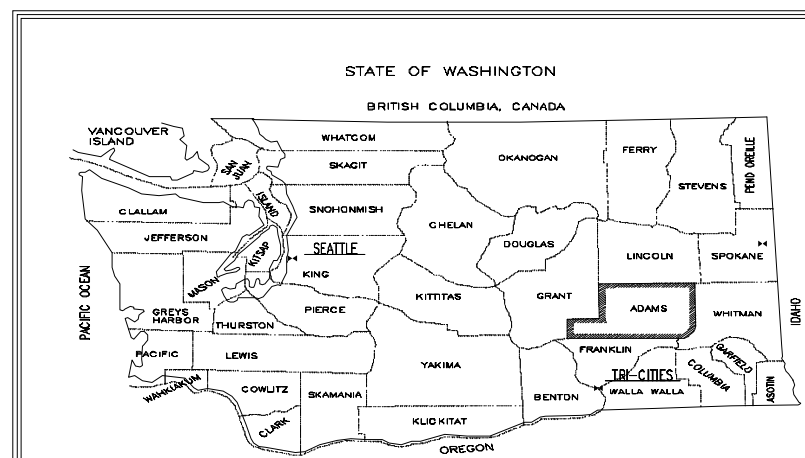


Adams County, Washington



Source: Adams County
 Planning & Building Department
 Data as of November 2009

Legend

Zoning District

- Commercial
- General Agriculture
- Heavy Industrial
- Light Industrial
- Prime Agriculture
- Rural Residential
- R-1 Residential currently not designated
- Rural Settlement
- Airport (Obstruction) Overlay

County Road

- Paved
- Graveled
- Unimproved

Other Features

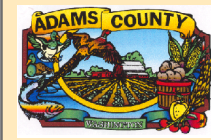
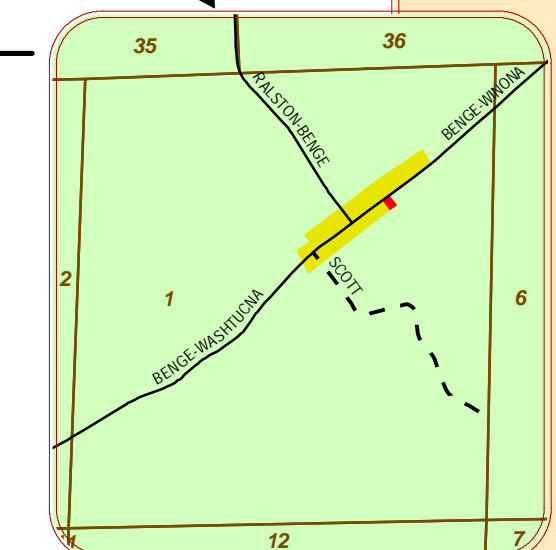
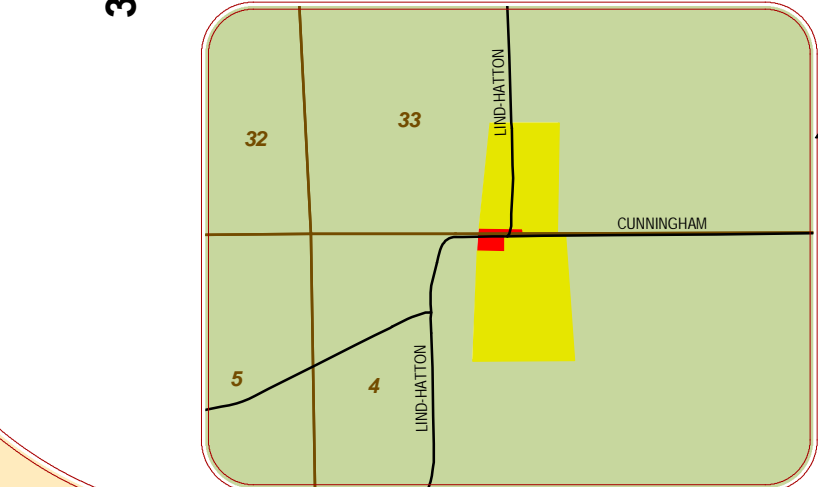
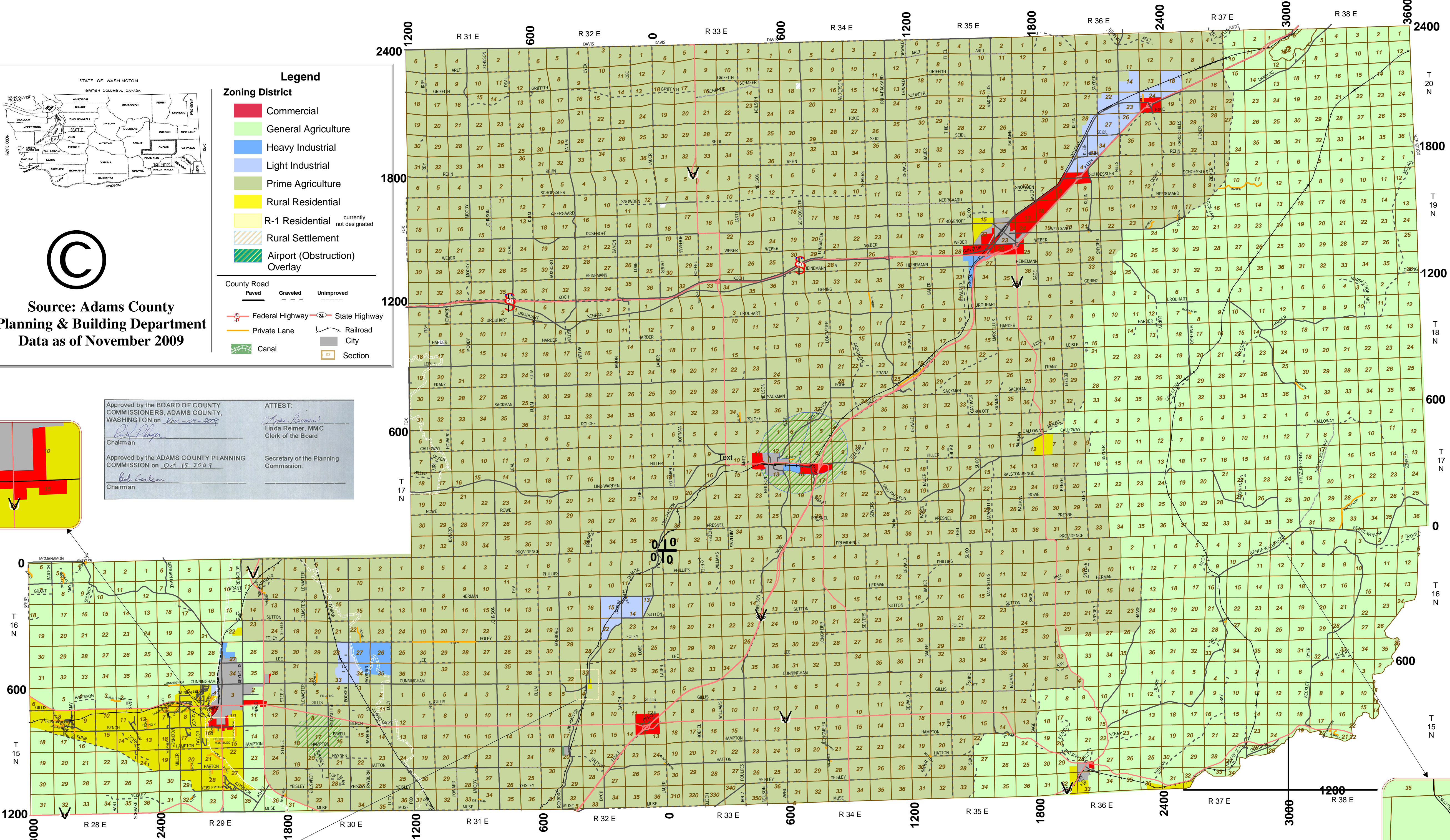
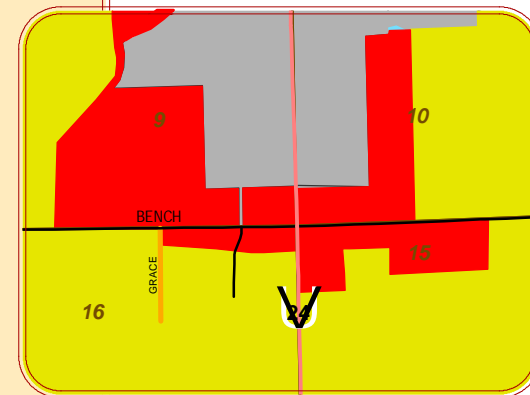
- Federal Highway
- State Highway
- Private Lane
- Railroad
- City
- Section

Approved by the BOARD OF COUNTY COMMISSIONERS, ADAMS COUNTY, WASHINGTON on Nov 27, 2009.

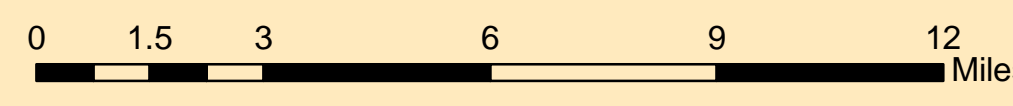
ATTEST:
 Linda Reimer, MMC
 Clerk of the Board

Approved by the ADAMS COUNTY PLANNING COMMISSION on Oct 15, 2009.

Secretary of the Planning Commission.



Zoning Map



Disclaimer: This product is provided as a service to the public and is not intended to be used as a substitute for professional engineering or architectural services. Adams County does not warrant the accuracy or reliability of this information for any specific purpose. Original data was compiled from various sources. Spatial information may not meet National Map Accuracy Standards although it is consistently being improved so that it will meet or exceed these standards. This information may be updated without notification.