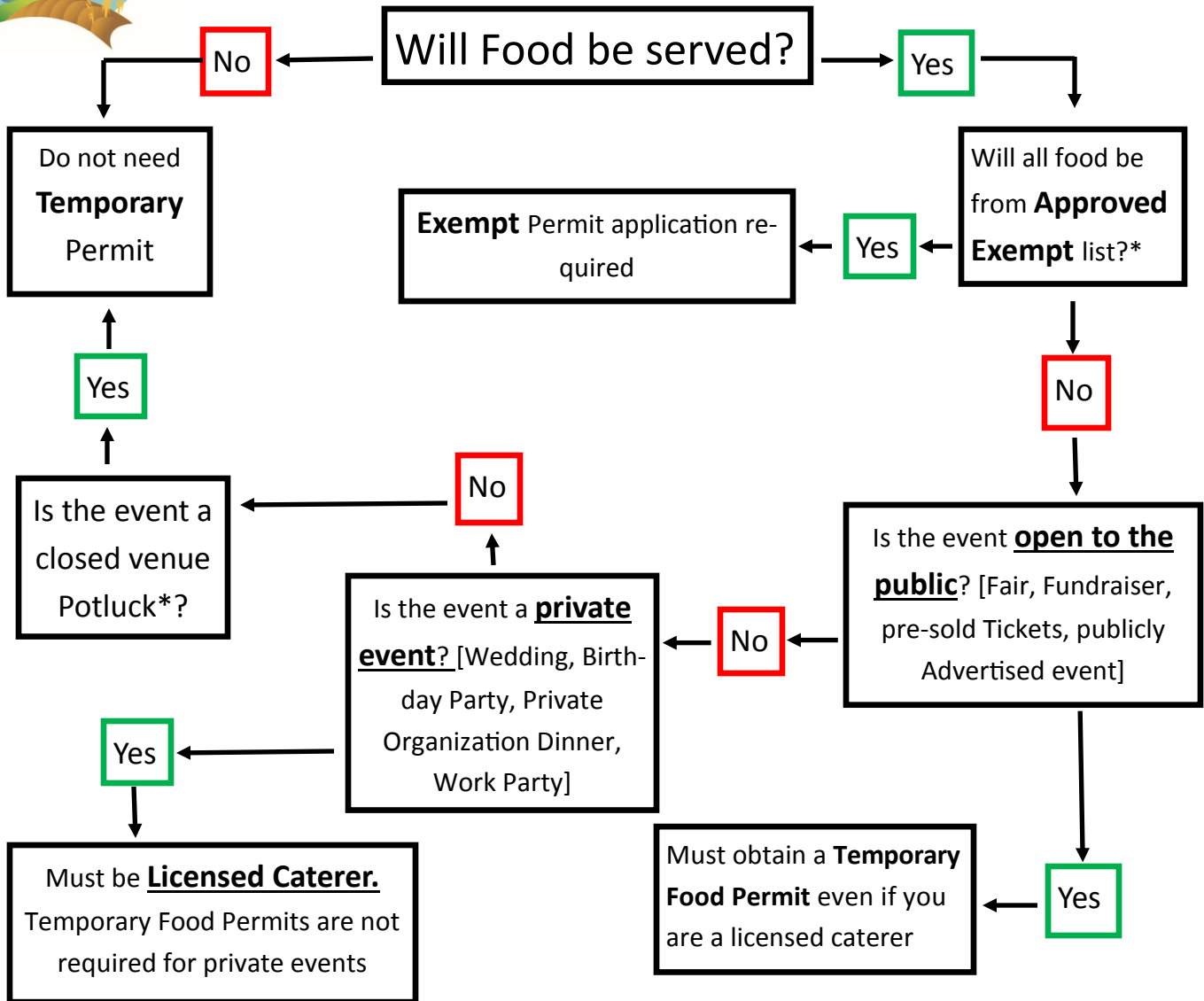




# TEMPORARY EVENTS

QUESTIONS?

509 488-2031



## Definitions:

1. \*Potluck—People attend the same event expected to share food with no compensation provided for bringing the food and no charge for food at the event.
2. Caterer—Person who prepares a specific menu and amount in an approved establishment to be served at a different location and may cook or do final preparations at the service location.
3. Take-Out/Delivery—Food prepared at an approved kitchen and delivered ready to eat at the final location. (No Serving)

## \*Washington State Approved Exempt Food List:

Popcorn (including kettle corn, Cotton Candy, Dried herbs and spices (if processed an approved facility), Machine crushed ice drinks (if made with non-potentially hazardous ingredients and ice from approved source), Corn on the cob (if roasted for immediate service), Whole roasted peppers (if roasted for immediate service) Roasted nuts and peanuts (including candy coated), Chocolate-dipped ice cream bars and bananas (if made with bananas peeled and frozen in an approved facility), Sliced fruits and vegetables for sampling (if used for individual samples of non-potentially hazardous produce), Individually wrapped non-potentially hazardous baked goods.